

Huntoon Copper Project

Five copper prospects within 6 km radius
in Mineral County, Nevada

Including:

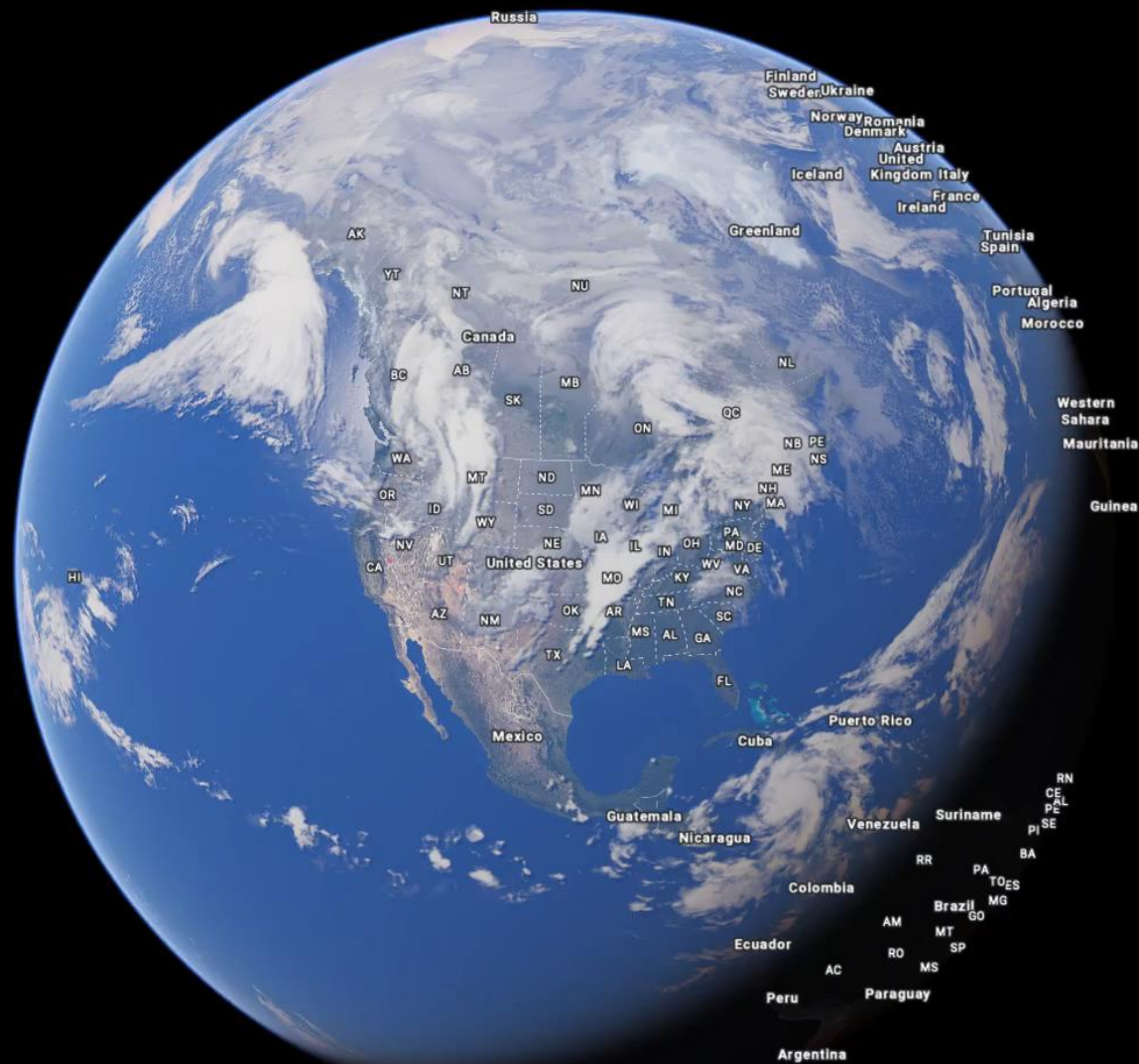
One **established skarn resource** with **abundant expansion potential**.

Two porphyry targets with **positive drill intercepts** and **excellent geophysical and geochemical anomalies**, ready for follow up.

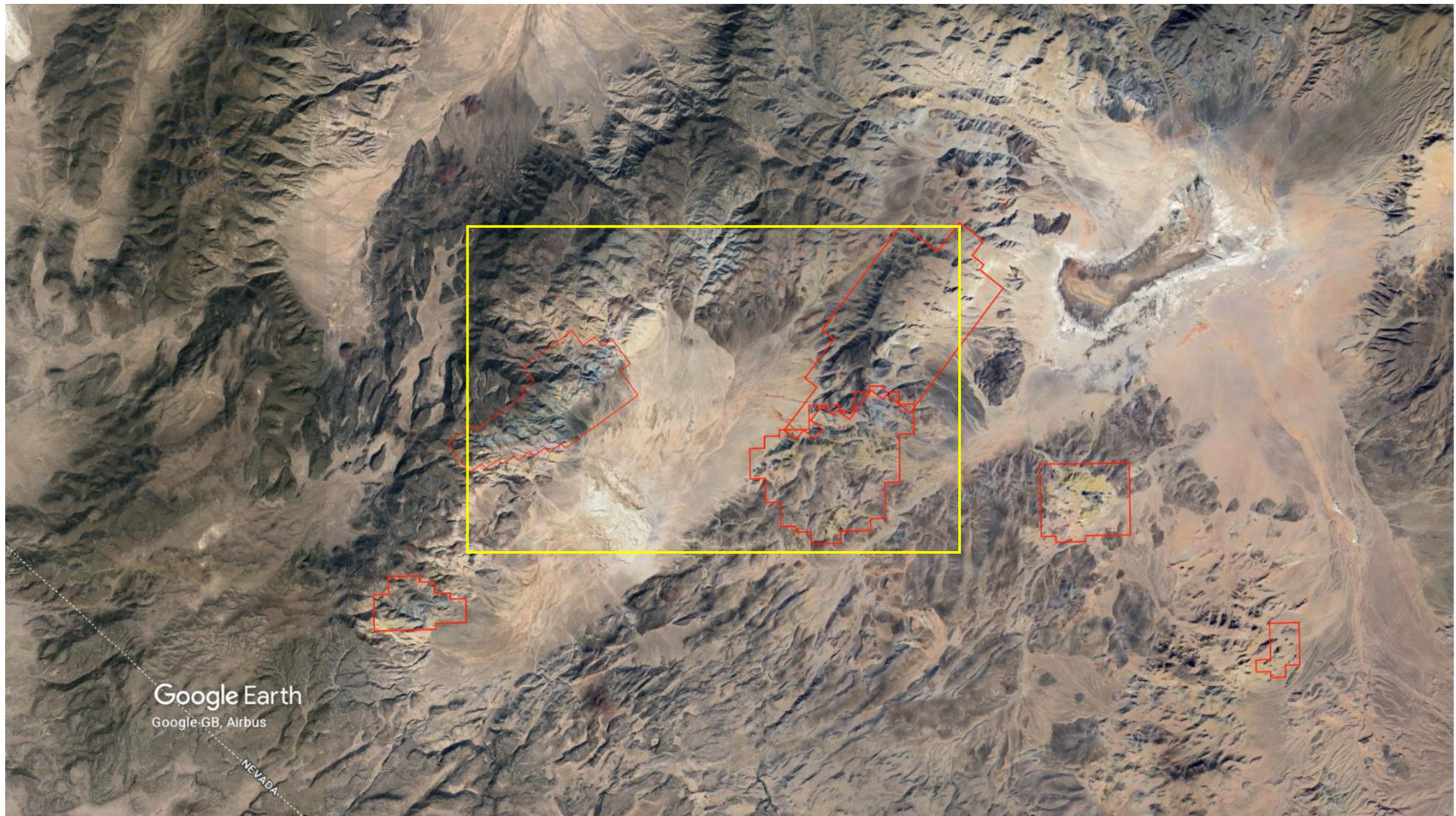
Two early-stage prospects with surface showings and **high-grade grabs**.

Evidence for wider porphyry / skarn setting in an emerging copper camp

Please note, this slide deck is best viewed in presentation mode, due to multiple overlapping images with animated transitions.

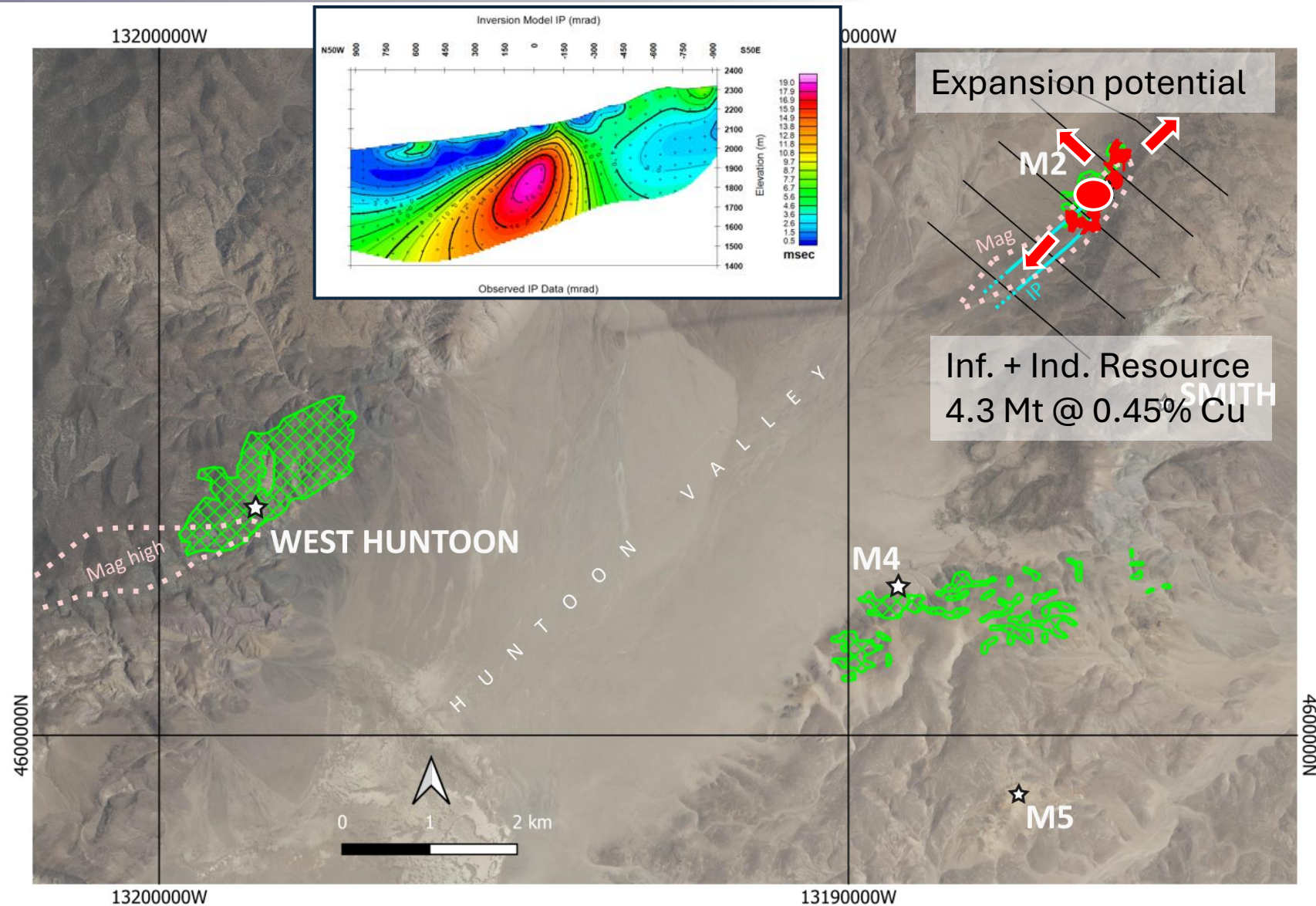
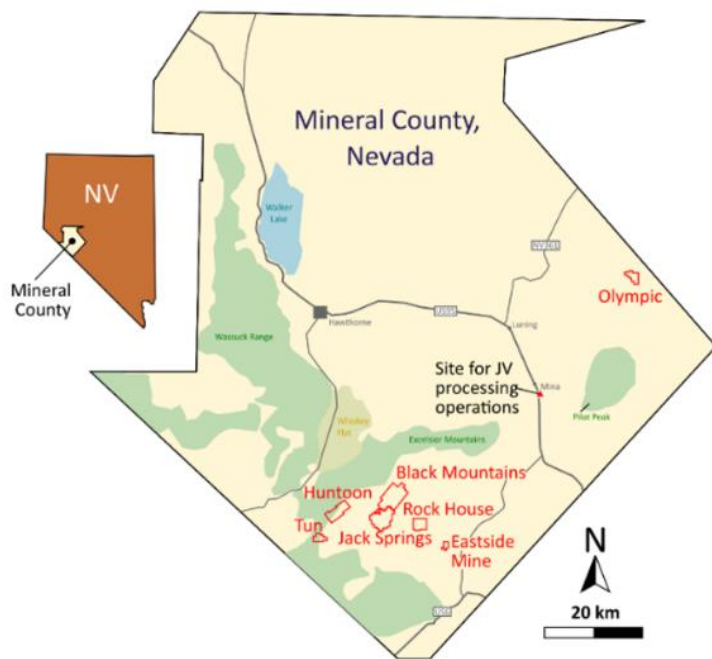


Google Earth
Google GB, Data SIO, NOAA



THE HUNTOON COPPER PROJECT

M2

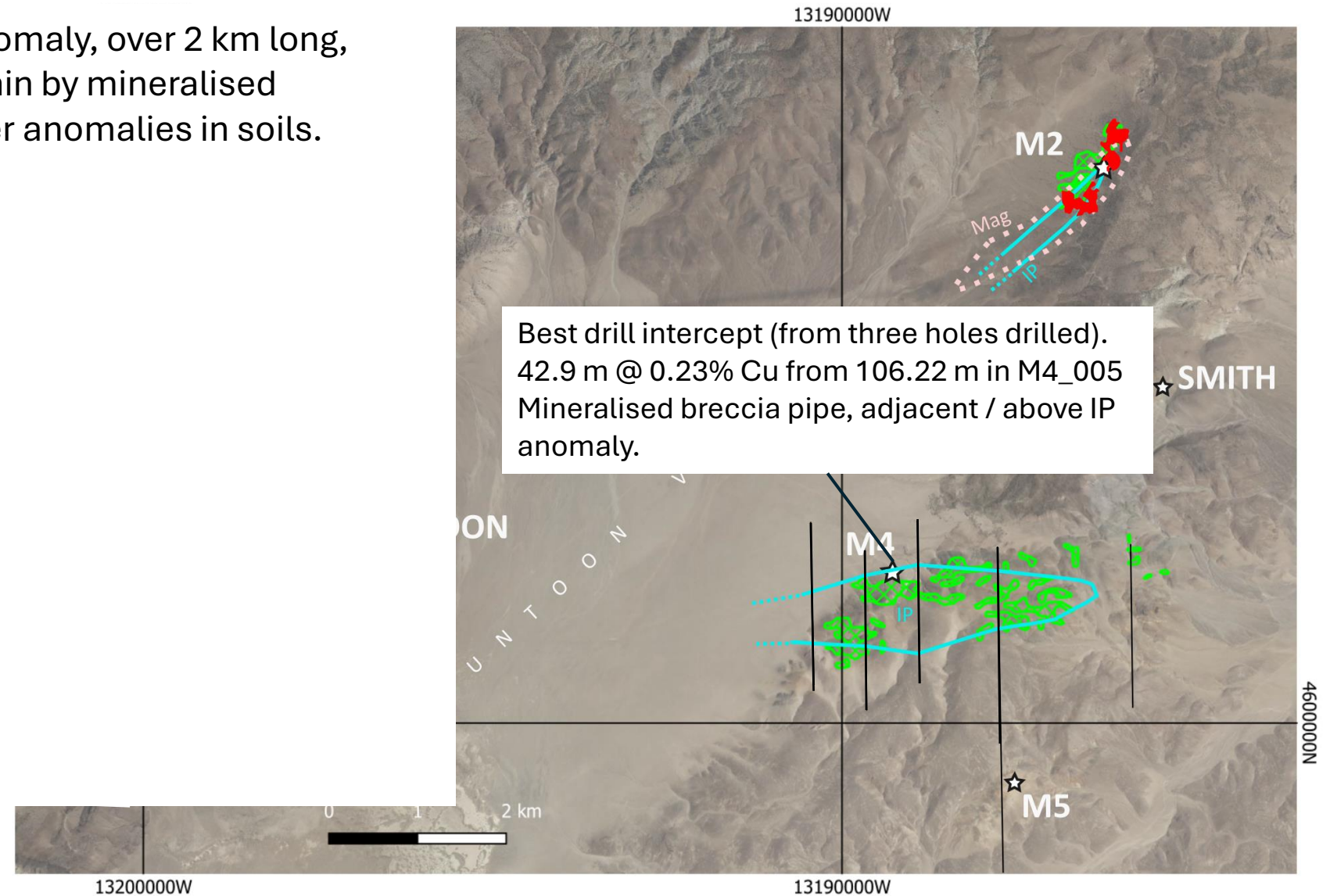


THE HUNTOON COPPER PROJECT

M4



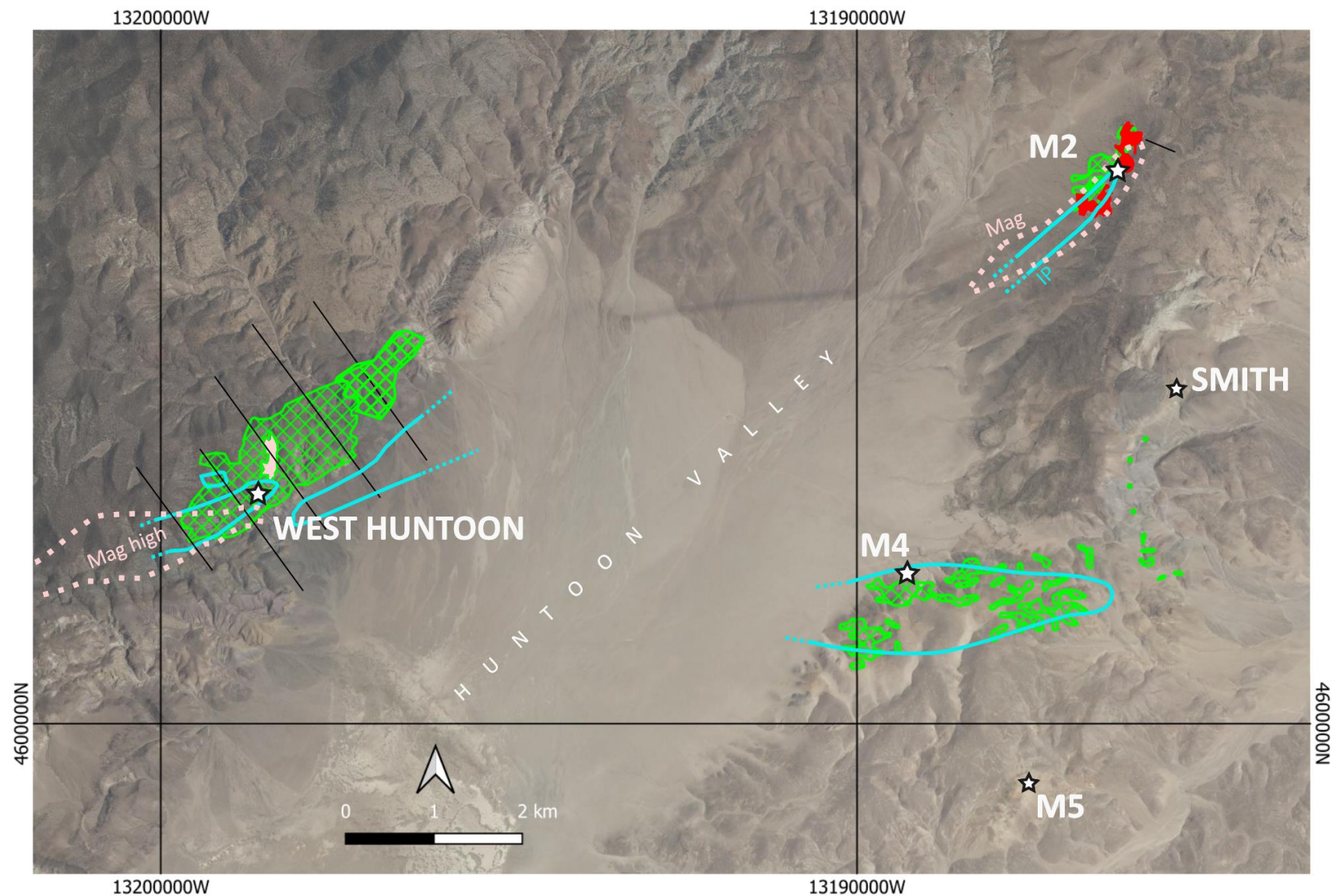
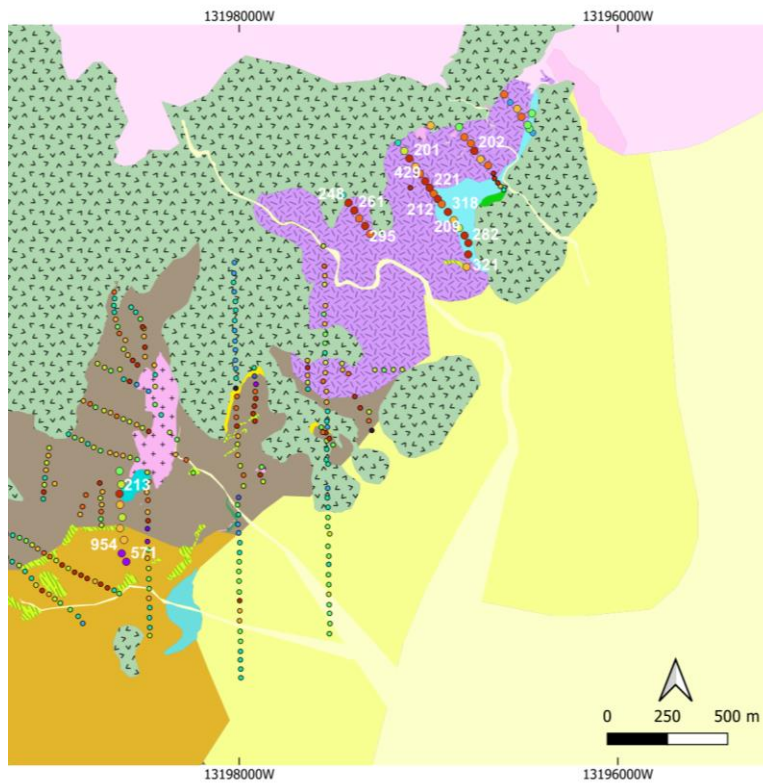
Strong chargeability anomaly, over 2 km long, undrilled to date, overlain by mineralised breccia pipe and copper anomalies in soils.



THE HUNTOON COPPER PROJECT WEST HUNTOON

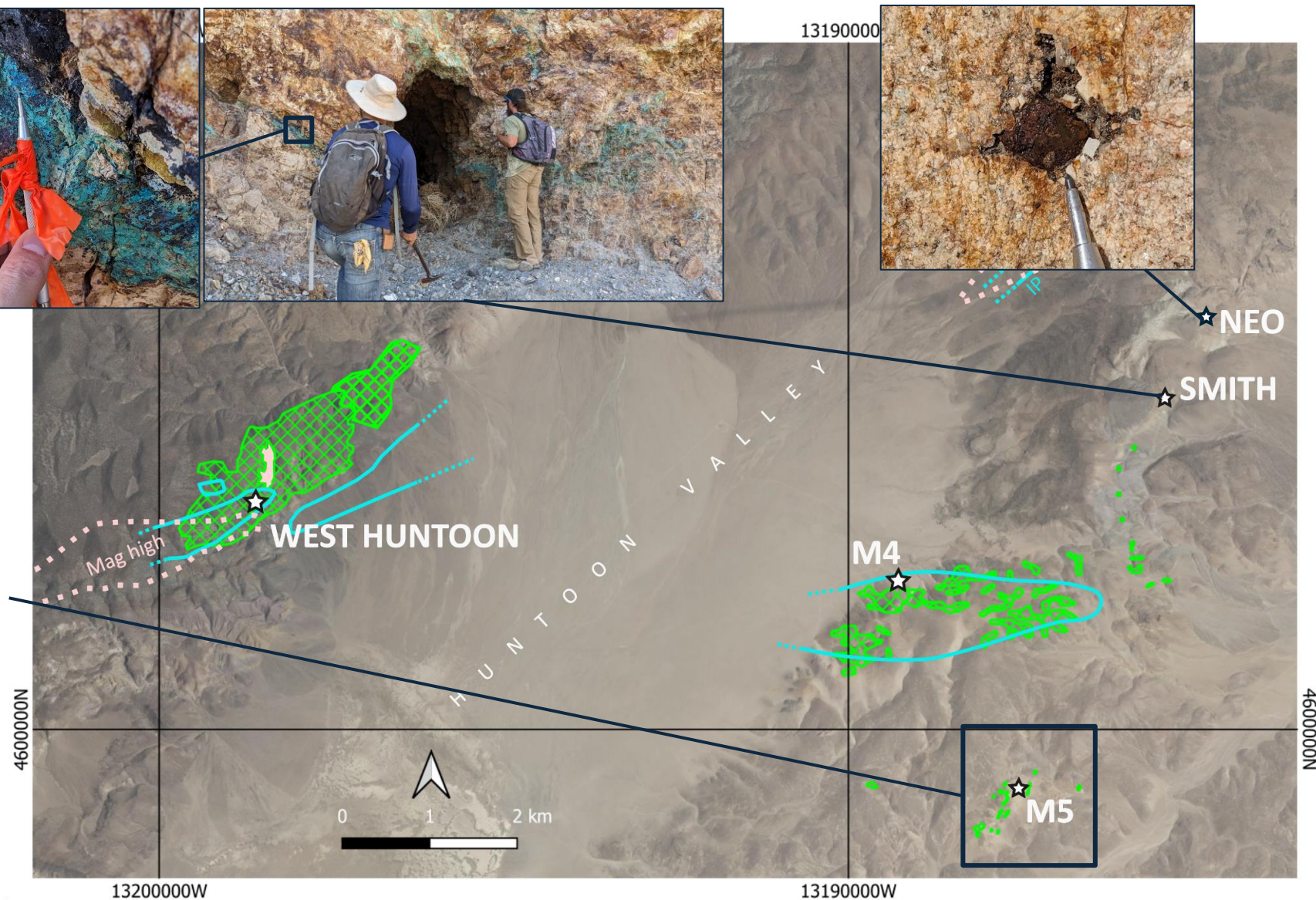
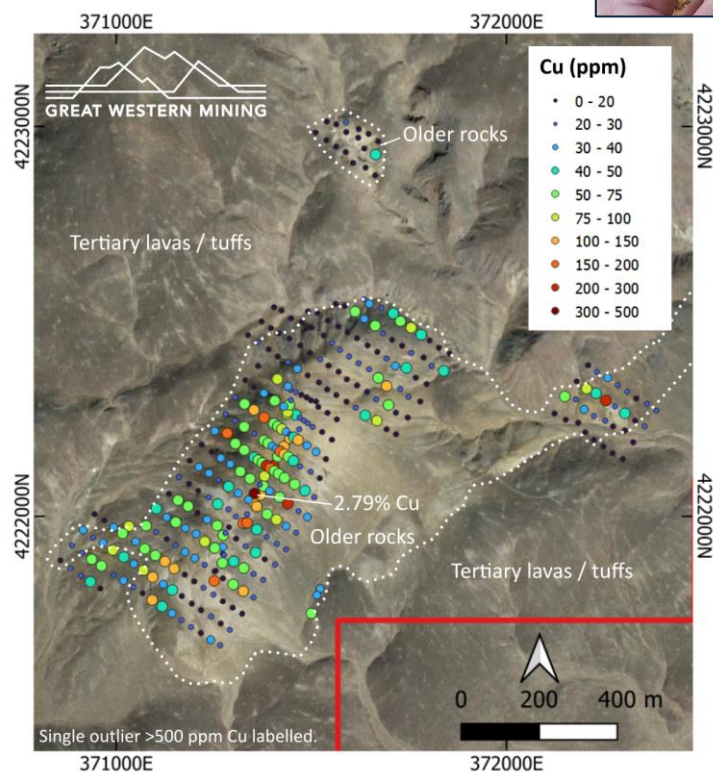


Northeastern expansion of copper-in-soils anomaly, reported Nov 2024



THE HUNTOON COPPER PROJECT

M5 & SMITH MINE



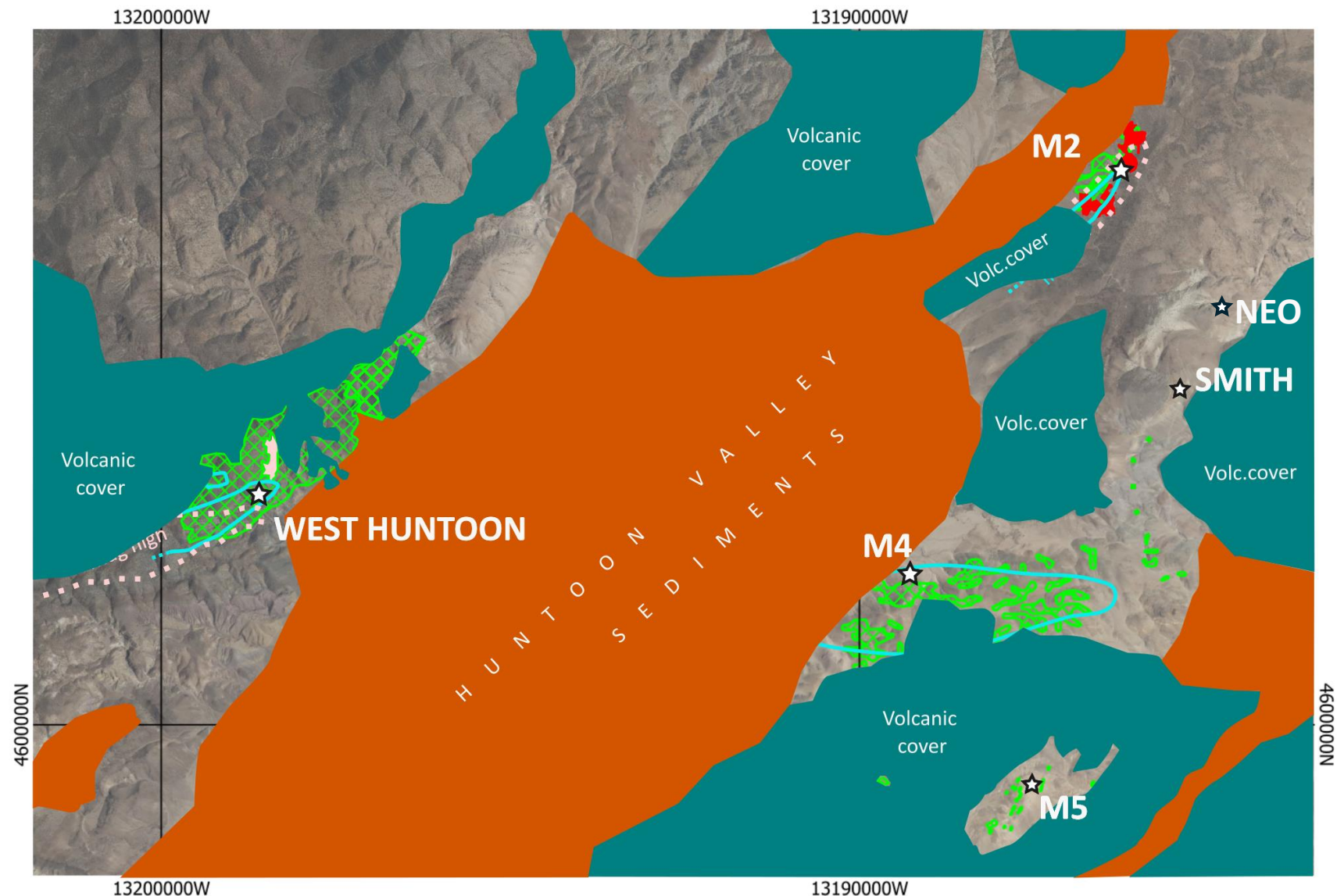
THE HUNTOON COPPER PROJECT RECAP



Within a 6 km radius, HCP has:

- M2 - an established resource with expansion potential.
- M4 – a mineralised breccia pipe above a large, strong, undrilled chargeability anomaly.
- West Huntoon – a large, and still growing, area of copper anomalism, centred on a granite with fluid release textures, with overlapping magnetic and chargeability anomalies.
- Two other prospects with further copper anomalism, and local granitoids & textures of target type.

Almost all parts of the prospects discussed occur in rocks *not* under cover, and at each, the evidence runs to the cover edge.



GWM COPPER PROJECTS WIDER REGION

